

# -25°C Biomedical Freezer

**DW-25L262**



## Hydrocarbon (HC) Energy-saving

DW-25L262 adopts an efficient hydrocarbon (HC) compressor and optimized refrigeration system, with power consumption as low as 0.95KW·h/24h.



## Environmentally Friendly

The HC system is a completely green refrigeration solution. With LBA foamed polyurethane insulation in line with European ROHS directive for environmentally friendly materials.



## Low Noise

Optimized hydrocarbon system and structural noise reduction design, DW-25L262 noise 34 dB, super quiet and low noise.



## Security Lock

Mechanical lock plus lock catch, the mechanical door lock can be opened with one key, and the door lock can be padlocked. Secure and safe, suitable for multiple users.

**Qingdao Haier Biomedical Co.,Ltd.**

No.280 Feng Yuan Road, High-tech Zone,  
Qingdao, 266109, P.R. China  
Tel: +86-0532-88935593  
Website: [www.haiermedical.com](http://www.haiermedical.com)



Haier Biomedical  
International



Haier Biomedical  
International



@haiermedicalint



@haierbiomedicalint



Haier Biomedical  
International

# -25°C Biomedical Freezer DW-25L262

## Product Features



### Microprocessor

- Microprocessor electronic temperature controller, LCD digital temperature display, display precision is 0.1°C, interior temperature set point -10~-25°C.
- Multiple alarms including high and low temperature, sensor error, power failure, door ajar, high ambient and remote alarm.
- Alarm mode: sound and light alarm.
- It can be connected to remote alarm.



### Hydrocarbon System

Increasing cooling rate, reducing energy consumption and lowering noise



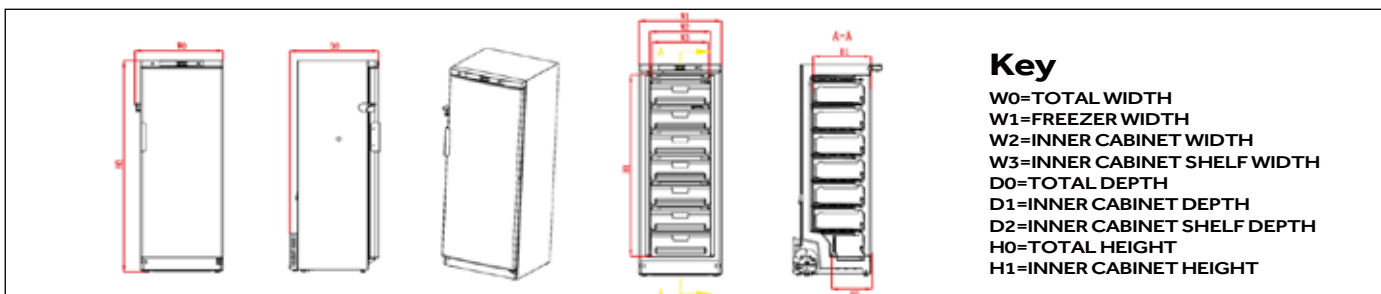
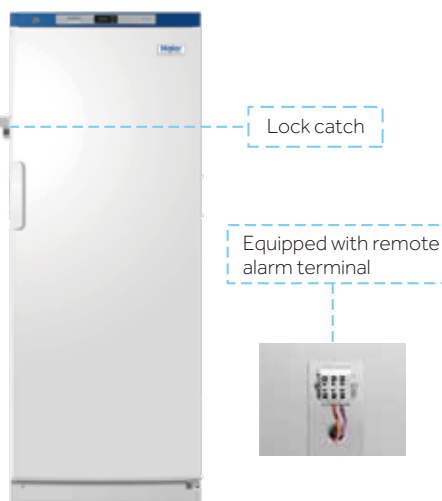
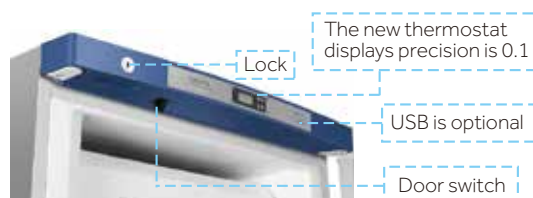
### Porthole

There is a standard access port (25mm inside diameter) on the left side of the unit, which is convenient for users to test independently.



### Multiple Interface Options

- Standard configuration: Remote alarm interface.
- Optional configuration: USB or RS485.



CODE MODEL	W0	W1	W2	W3	D0	D1	D2	H0	H1
DW-25L262	700mm	657mm	480mm	450mm	705mm	465mm	313mm	1665mm	1430mm

## Specifications

Defrost Mode	Refrigerant	Sound Level (dB(A))	Cooling Performance (°C)	Temperature Range (°C)	Power Supply (V/Hz)	Power (W)
Manual	HC	34	-25	-10~-25	220-240/50	270

Electrical Current (A)	Power Consumption (kW·h/24h)	Capacity (L/Cu.Ft)	Net/Gross Weight (approx)(kg)	Internal Dimension (W*D*H)(mm)
1.4	0.95	262/9.3	88/93	480*465*1430

Exterior Dimension (W*D*H)(mm)	Container Load (20'/40'/40'H)	Alarms	Certification
700*705*1665	21/45/45	High/Low Temperature, Remote Alarm, Power Failure, Sensor Error, High Ambient Temperature, Door Ajar	CE